

# Quick Change Placemats

**By: Heidi Proffetty**

**Skill Level: Beginner**

**Makes: Set of 4 Placemats with Removable Covers**

**Placemat Finished size: 18 1/2" x 13"**

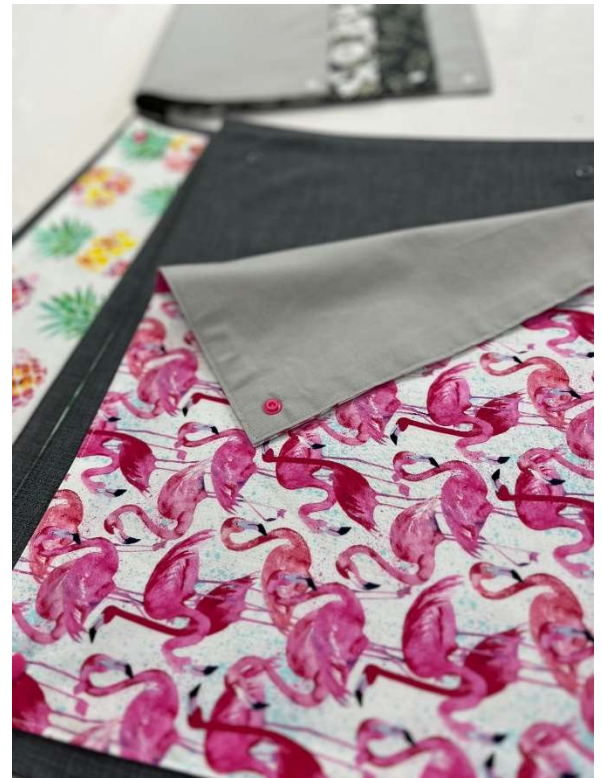
**Time: 1 Afternoon**

Here's a clever placemat project that will have you reconsidering your traditional placemats. This DIY placemat project consists of two pieces, a placemat base with exposed border and removable snap on decorative covers.

Let say you just spilled or dripped something on your pretty placements. Instead of waiting to send the whole placement through a washing machine cycle, you can quickly unsnap the decorative cover and snap on a fresh new one.

You can make custom covers to color coordinate with your kitchen or dining space to add that perfect splash of color to accent your room or choose licensed character fabrics and novelty prints to make the perfect super hero or villain themed birthday party special.

Make some extra covers for other celebrations or upcoming holidays. And don't forget about your patio table, make additional placemat sets using outdoor fabrics to create a splendid summertime table setting for you and your guests



## **PROJECT SUPPLIES**

1 – Yard of 58” – 60” Polyester Fabric  
4 – Novelty Print Cotton Fabric Fat Quarters or (1/2 yards of assorted themed cotton fabrics)  
1 1/8 – Yards of Coordinating Solid Color Cotton Fabric  
1 1/8 – Yards of Pellon Fusible Featherweight 911F  
Coordinating thread colors to match your project pieces. 40 wt. Rayon or Polyester Thread  
Fabric Marking Pen  
16 – KAM Resin Snaps (Standard and Long prong types) & KAM Snap pliers\*  
Awl  
Tweezers  
Small Screwdriver  
Regular fabric cutting scissors  
Cutting mat, Rotary Cutter & Standard quilt ruler  
Pressing Cloth, Iron & Ironing surface  
Straight pins or Clover mini clips  
Washable Glue stick  
Janome Purple Tip Needle or Topstitch Size 80/12 or 90/14  
BI-Level Presser Foot (Available for 9 mm Janome sewing machines) or standard straight stitch foot

\*You Can Purchase a KAM Starter Kit which includes: snaps, pliers, awl, tweezers and small screw driver



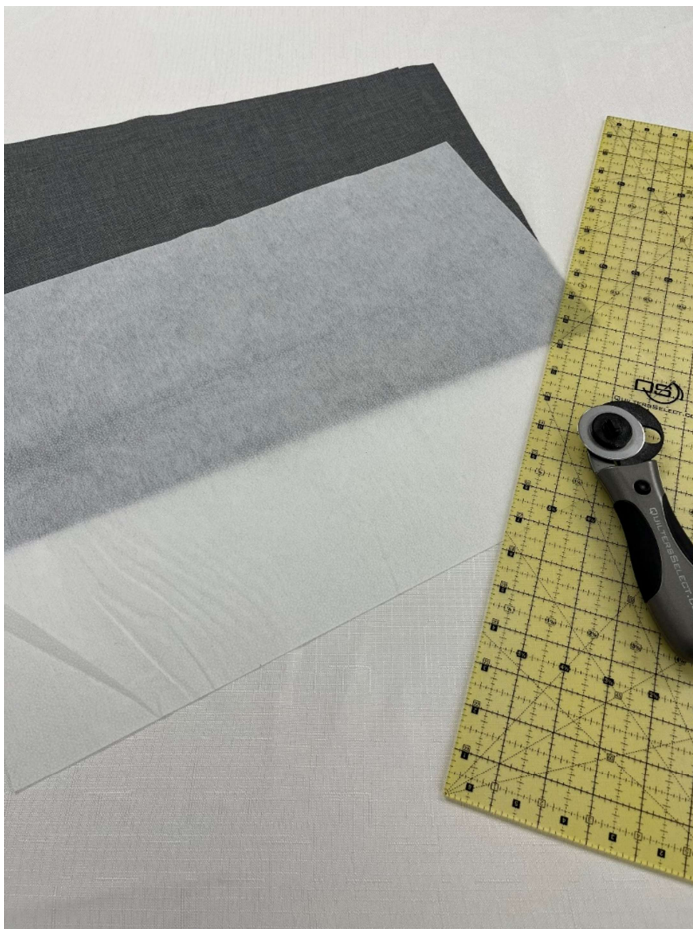


## PART 1 – Fabric Cutting

Prewash fabrics to eliminate fabric shrinkage, starch if desired and press.

Use your rotary cutter, cutting mat and quilt ruler.

1. Polyester fabric, cut 8 fabric pieces each measuring  $19\frac{1}{2}$ " x 14"
2. Trim each of the 4 Novelty Print fat quarters to measure  $18\frac{1}{2}$ " x 13" or cut from assorted  $\frac{1}{2}$  yards of fabric, 4 pieces measuring  $18\frac{1}{2}$ " x 13"
3. Solid color cotton fabric, cut 4 fabric pieces each measuring  $18\frac{1}{2}$ " x 13"
4. Pellon Fusible Featherweight, cut 4 pieces each measuring 14" x  $19\frac{1}{2}$ ", cut 16 pieces each measuring  $1\frac{1}{2}$ " x  $1\frac{1}{2}$ "



## PART 2 – Sewing Machine Set Up

Thread sewing machine with coordinating top and bottom threads

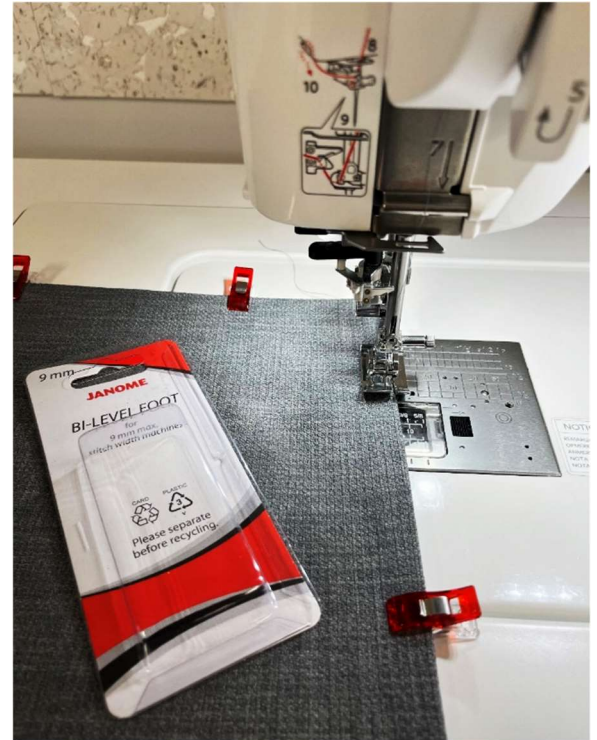
Install a fresh new needle. Janome Purple Tip Needle or Topstitch Size 80/12 or 90/14

Install a Bi-Level foot\* or standard straight stitch foot. Set your needle position between 1/16" – 1/8" markings on Bi-Level foot or make other adjustments for edge stitching

Set your sewing speed to Medium Speed  
Set the needle in the down position in fabric (If your machine has this function)

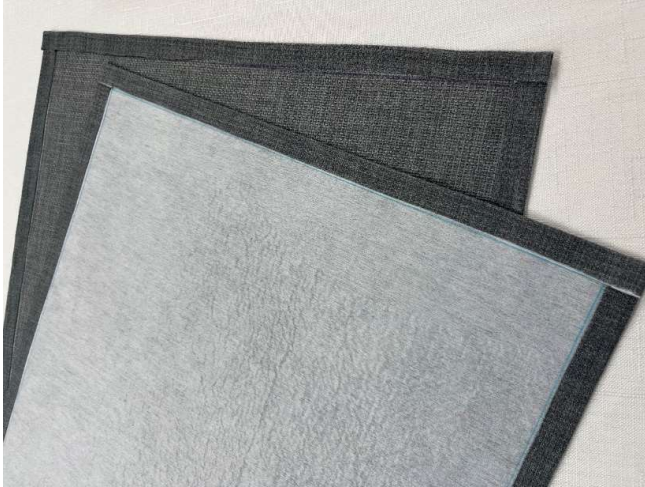
Select a straight stitch and use a stitch length of 2.4

*\*This tutorial focusing on using a Bi-Level Presser Foot.*



### **PART 3 – Preparing the Placemat Bases with Exposed Trim**

1. Following manufacturer's instructions, fuse 1 piece of featherweight to the reverse side of 4 polyester fabric pieces. For each of the 8 polyester fabric pieces, on the reverse side, use fabric marking pen, mark 1/2" in from raw edges on all 4 sides. Working with long edges first then repeat for the shorter edges, turn & press the raw edges inward to meet the markings. Then press entire piece front and back, press carefully as to not to unfold the already pressed edges.



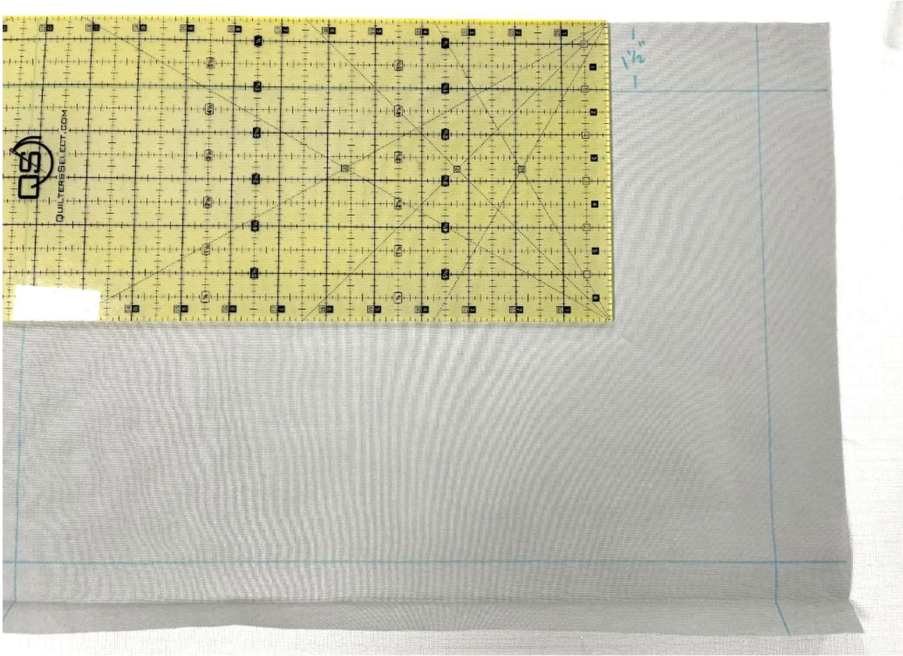
2. Place 1 prepared with fusible fabric piece on top of 1 unlined fabric piece, wrong sides together, taking time to align the outer edges evenly on all 4 sides. (See additional reference photo's regarding alignment under Part 4). Then edge stitch very close along all 4 sides. Back tack on start and end.





## PART 4 – Preparing the Decorative Covers

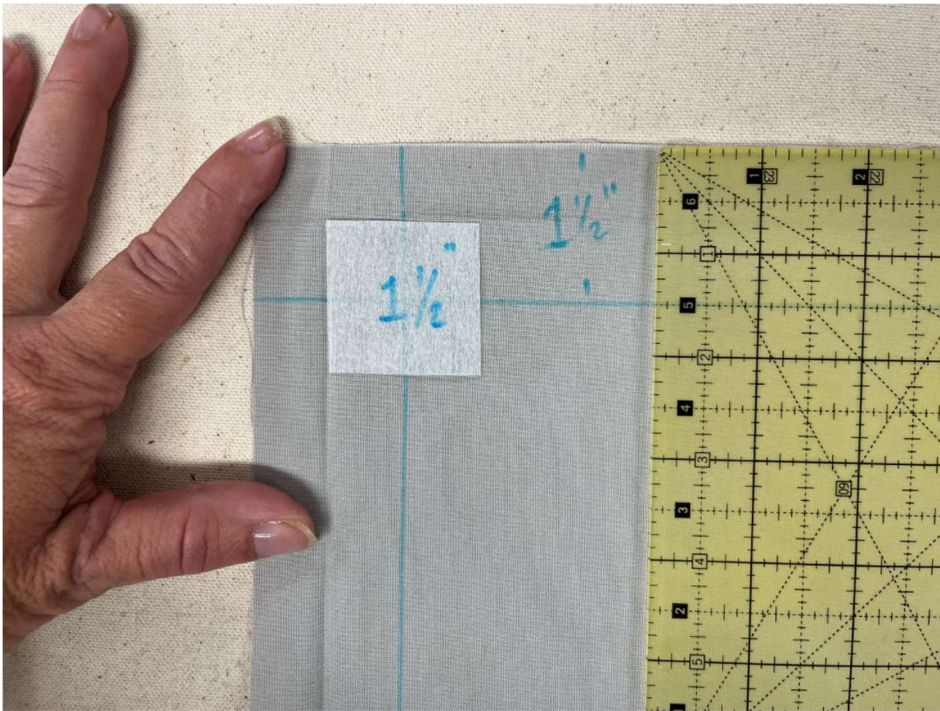
1. Using the 8 pieces of prepared Novelty & Solid Cotton fabric pieces, on the reverse sides, use a fabric marking pen, mark 1 ½” in from raw edges on all 4 sides.



2. Working with long edges first then repeat for the shorter edges, turn the raw edges inward to meet markings & press flat. Use clips to temporarily hold.



3. Next press entire piece front and back. Then working with 4 of the prepared fabric pieces, open out the already pressed seams in each corner, align and insert a piece of  $1\frac{1}{2}$ " x  $1\frac{1}{2}$ " fusible featherweight. Use a small dab of washable glue to hold the featherweight in place. Fold the edges inward again and carefully press each corner.





4. Place 1 fabric piece prepared with fusible on top of 1 unlined fabric piece, wrong sides together, taking time to align outer edges on all 4 sides. Use pins or clips to hold pieces together.





5. Again, edge stitch very close along all 4 sides. Back tack at beginning and end.



*Designer Tip: If you want to make choose the exact motif to work with or to align a directional motif for the decorative covers. Use a piece of featherweight cut to the same dimensions of the decorative fabric pieces. The featherweight is transparent and allows you to fussy cut the fabric pieces for your decorative covers. Simply place your featherweight on top the fat quarter or yardage, position the featherweight over the motif or pattern as desired and fussy cut your decorative cover using the featherweight as your guide.*



## Part 4 – Insert the Snaps on the Placemat Bases

1. Gather snap tools. Kam snaps come with 4 different pieces: 2 caps, 1 socket & 1 stud.



2. For each of the prepared placemat bases, you will be installing a cap & socket in each corner. For detailed images on how to install KAM snaps, refer to Part 6. Set up your KAM pliers up following KAM instructions. Practice installing a few snaps on scrap fabric first.

Next, using your placemat base, decide on your snap placement and using a fabric marker, measure & mark a dot on placemat base to represent the center point of the snap. For this pattern we are leaving an approximate  $\frac{3}{4}$ " exposed trim on all 4 sides and the snap placement is approximately 1  $\frac{1}{2}$ " in for each corner. Use an awl to poke through all layers for each marked dot. Choose a cap whose prong will be long enough to be fully exposed through multiple layers of fabric. The placemat base is thicker than the decorative covers, you will need caps with slightly longer 6.2 mm prongs. Insert the prong from the backside of the placemat. Next place a socket on top of the exposed prong. Align the pliers and squeeze firmly. Unlike installing metal snaps, you will not need to squeeze your pliers with too much force because these snaps are made of plastic/resin. Repeat this step for all 4 corners.



This is what your placemat base will look like after installing caps in all four corners.



### Part 6 – Insert the Snaps on the Decorative Covers

- Using snap tools. For each of the prepared decorative covers, you will be installing a cap & stud in each corner.

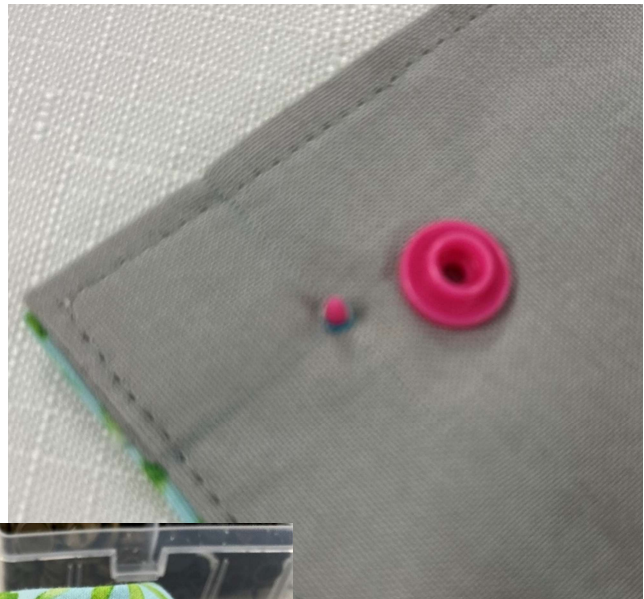
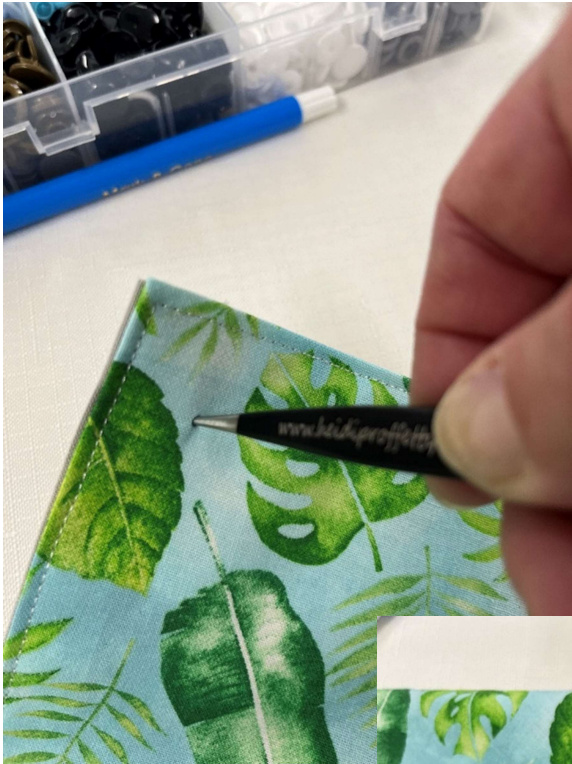


4. Measure and mark your snap placement to align with the sockets that you previously installed on the placemat base. Proper alignment is an important step here if you want your decorative covers to sit nice and flat. The snap placement is approximately  $\frac{1}{2}$ " in for each corner.





5. Again, using an awl to poke through all layers for each marked dot. Next insert a cap with its prong pushed through the right side of the decorative cover exposing the prong on the reverse side, place a stud on top of the prong. Using your pliers squeeze firmly.



Double check the snap alignment and that each cover snaps securely onto each placement base. *You're finished!*



Consider this...skip buying a set of traditional placemats and instead make your own set of Quick-Change Placemats. And don't forget! Sew lots of extra custom covers to stylishly meet all of your entertainment needs.

Happy Spring Sewing!  
Heidi